



米 顿 罗  
MILTON ROY



**Hamilton Sundstrand**

A United Technologies Company

汉胜工业设备(上海)有限公司

米顿罗公司是全球范围内设计、生产和销售计量泵及专业泵机的行业领导者。在石化、化工、石油/天然气、水处理、纸浆造纸、制药和发电等多种工业过程领域，米顿罗已成为全球计量泵和加药系统的首选供应商。70年持之以恒的优质产品和可信赖的服务为其树立了优秀的品牌和良好的声誉。米顿罗在全球的三大研发、生产和服务中心分别位于美国、法国和中国上海，共同构筑其产品和服务优势，满足全球客户的需要。

Milton Roy Company is a global leader in the design, manufacture and sales of metering pumps and speciality pumps. It is a preferred supplier of metering pumps and dosing systems to the chemical processing, hydrocarbon processing, oil/gas, water treatment, pulp and paper, pharmaceutical, power and other industries all over the world. In the last 70 years, Milton Roy built up its' famous brand and best reputation relies on excellent products of high quality, as well as its' reliable technical support and customer service all along. Now, Milton Roy has three centers based in United States, France and Shanghai China, which focus on research, manufacture and service, all together to develop its' strengths to satisfy worldwide customers.



**米 顿 罗**  
**MILTON ROY**

## 世界第一台计量泵的发明者

### 米顿罗的里程碑

- 1936年，发明世界上第一台马达驱动计量泵
- 1963年，发明世界上第一台电磁驱动计量泵
- 1965年，发明世界上第一台气动计量泵

### MILESTONE OF MILTON ROY

- 1936, Invented the first Motor Driven Metering Pump in the world
- 1963, Invented the first Electromagnetic Driven Metering Pump in the world
- 1965, Invented the first Pneumatically Driven Metering Pump in the world



### 米顿罗的产品

计量泵、增压泵、水处理监控仪表、搅拌机、溶液制备及投加系统、加臭系统、附件等

### PRODUCTS OF MILTON ROY

Metering pump, Gas booster, Water Treatment Instrument, Mixers, Chemical Solutions Preparation and Injection System, Odorant Injection System, Accessories, etc



**Hamilton Sundstrand**  
A United Technologies Company

汉胜工业设备(上海)有限公司

汉胜工业设备(上海)有限公司成立于2001年，专业设计生产米顿罗及胜达因品牌产品。汉胜(上海)是米顿罗及胜达因之母公司美国汉胜公司在上海设立的独资企业。汉胜与世界著名的开利空调、奥的斯电梯、普惠发动机、西科斯基直升机、集宝安防系统等同属世界500强的美国联合技术公司。

汉胜(上海)秉承米顿罗和胜达因的技术优势，以中国和亚洲用户的需求为关注焦点，致力于以其严格高效的管理体系和高素质的人才队伍，保证其产品和服务的卓越竞争性。公司建立了ISO9001:2000的质量保证体系，并实施联合技术公司的ACE体系，以不断完善研发、生产和服务各过程。汉胜通过其在中国及亚洲主要城市办事处、各地的经销商和售后服务中心体系正以专业的方式和最快的速度响应我们的客户，高质量服务于中国和亚洲市场。



胜达因公司是全球范围内高速泵/压缩机、无泄漏磁力泵及正弦泵的行业领导者。在石化、化工、石油天然气、能源、无机化工、造纸、食品、采矿等多种工业过程领域，胜达因致力于为市场提供关键流体输送的最佳解决方案。产品设计符合全球工业标准，包括ANSI/ASME、API、ISO、JIS、FDA和3A。胜达因在美国、英国、德国、法国和中国上海的研发、生产和服务基地共同为全球客户提供卓越的应用、技术和客户服务支持。如今，胜达因的名字也已被译成各种语言，享誉全球。

Sundyne Corporation is a global leader in the design, manufacture and sales of high-speed pumps, compressors, magnetic driven sealless pumps and sine pumps. It dedicates to provide the best options to solve its critical liquid handling applications in chemical processing, Hydrocarbon processing, oil/gas, power, abiochemistry, pulp and paper, food and mining. Equipment designs meet worldwide industrial standards including ANSI/ASME, API, ISO, JIS, FDA and 3A. For long, Sundyne continues to offer application guidance, technical support and customer service through a worldwide network of design and manufacture facilities in United States, England, Germany, France and Shanghai China. Today, the Sundyne name is recognized in languages around the world.



## 世界第一台高速泵、无泄漏磁力泵的发明者

### 胜达因的里程碑

1962年，发明世界上第一台胜达因高速离心泵

1946年，发明世界上第一台无泄漏磁力驱动泵

1981年，发明世界上第一台MASO正弦泵

### MILESTONE OF SUNDYNE

1962, Invented the first Sundyne High-Speed Centrifugal pump in the world

1946, Invented the first Sealless Magnet Drive Pump in the world

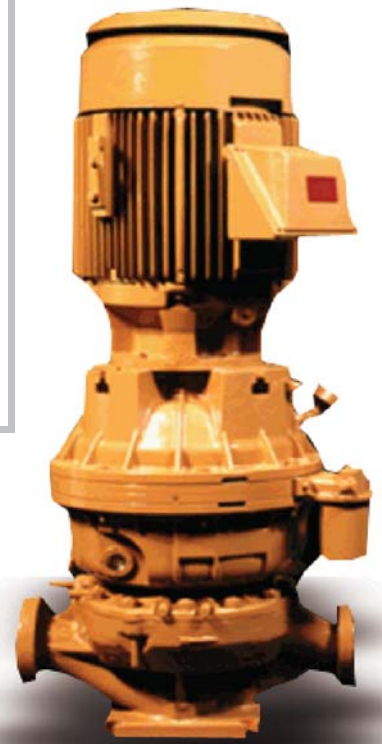
1981, Invented the first MASO SINE Pump in the world

### 胜达因的产品

高转速离心泵、高转速离心式工艺气压缩机、  
无泄漏磁力泵、高压离心泵、正弦泵等

### PRODUCTS OF SUNDYNE

High-speed Centrifugal Pump, Compressors,  
Sealless Magnet Pump, High-Pressure Centrifugal Pump,  
Sine Sanitary Pump, etc



Hamilton Sundstrand Industrial (Shanghai) Co. Ltd (HSIS) design and manufacture MILTON ROY and SUNDYNE products from 2001 when it established. HSIS is wholly owned by American Hamilton-Sundstrand Company, which is the parent company of MILTON ROY and SUNDYNE. Hamilton-Sundstrand along with the world famous Carrier Air conditioning, Otis Elevator, Pratt&Whitney Engine and Chubb are subsidiaries of the United Technologies (UTC), which is based in US and is one of the World Top 500.

HSIS combines the technology advantage of MILTON ROY and SUNDYNE to focus on China and Asia market. It aims at providing competitive products and service to Chinese and Oriental customers supported by its effective management system, high-quality employee team, predominate product capabilities and superior quality. HSIS has established ISO9001: 2000 quality control system, and also implemented ACE system of UTC, which helps the organization to continuously improve its R&D, production, service etc processes. The regional offices in major cities of China and Asia, the nationwide distributors / representative network and after-sales service centers ensure our prompt and professional response to our customers. HSIS is aiming at continuously improving to develop and maintain as the leader in China and Asia Pump market.



# 米顿罗全球研发、生产和服务基地



米顿罗其它主要生产厂所在地: ● 美国波士顿: 米顿罗LMI生产厂 ● 法国巴黎近郊枫丹白露: 米顿罗ROBIN搅拌分部 ● 美国BURBANK: 米顿罗HASKEL生产厂



汉胜工业设备(上海)有限公司

汉胜工业设备(上海)有限公司  
地址: 上海市莘庄工业区申富路879号1栋  
邮编: 201108  
电话: (021)61211600  
传真: (021)54425266  
www.hsis.com.cn

北京分公司  
地址: 北京市朝阳区朝外大街甲6号  
万通中心C座1801室  
邮编: 100020  
电话: (010)59070641  
传真: (010)59070640

广州分公司  
地址: 广州市天河区天河北路233号  
中信广场1509单元  
邮编: 510620  
电话: (020)38912408  
传真: (020)38912591

成都办事处  
地址: 成都市人民南路二段18号  
川信大厦16层D-1座  
邮编: 610016  
电话: (028)86199340  
传真: (028)86199341

西安办事处  
地址: 西安市北大街55号  
新时代广场9层E号  
邮编: 710003  
电话: (029)87208269  
传真: (029)87208091

汉胜工业(上海)保留未经预先通知而更改的权利。此样本中提供的参数与特权仅供参考, 以各产品的书面说明为准。  
©2008 汉胜(上海)公司 版权所有 CV.MR.HSIS.09/2008.Rev.D





**LMI电磁驱动  
隔膜计量泵**



**产品特点:**

- 电磁驱动设计, 结构更简单
- 可直接接受外部控制信号
- 出口接多功能阀, 集释压、防虹吸、背压及帮助启动于一体
- 安装简便, 自带脚阀、注射阀及进出口软管

**主要参数:**

最大流量: 95L/H  
最高压力: 70Bar

**主要应用:**

循环水处理、反渗透、  
泳池水处理、废水处理等

**FEATURES & BENEFITS:**

- Electromagnetic Power Unit(EPU) is designed for efficiency and consistent performance
- Advanced control options for simplified system integration(pulse multiply/divide, 4-20mA, remote on/off)
- Discharge auto prime valve functional for pressure relief, priming aid, line drain and anti-siphon
- Injection check valve, foot valve and tubing convenient for pump installation

**TECHNICAL SPECIFICATIONS:**

Capacity: Up to 95L/H  
Max. Pressure: 70Bar

**APPLICATIONS:**

Cooling water, Boiler water,  
Reverse osmosis, Swimming pool, etc

**马达驱动机械  
隔膜计量泵**



**产品特点:**

- 完全无泄漏
- 坚固的铸铝壳体, 耐腐
- 可变偏心驱动结构平缓脉动
- 专利技术的隔膜设计
- 适合于中低压场合

**主要参数:**

最大流量: 1,800L/H  
最高压力: 12Bar

**主要应用:**

市政水处理、工业水处理等

**FEATURES & BENEFITS:**

- Absolutely no leakage
- Cast aluminum housing with corrosion resistant paint finish
- Variable eccentric drive design generates much lower pulsations
- Special design on diaphragm with patent technology
- Suitable for operation under mid-lower pressure system

**TECHNICAL SPECIFICATIONS:**

Capacity: Up to 1,800L/H  
Max. Pressure: 12Bar

**APPLICATIONS:**

Municipal water treatment,  
Chemical process industrial,  
Water treatment, etc

**马达驱动液压  
隔膜计量泵**



**产品特点:**

- 完全无泄漏
- 液压驱动, 隔膜寿命更长
- 内置可调压力释放阀
- 机械自动补油阀确保计量精度
- 可多台并联工作

**主要参数:**

最大流量: 15,885L/H (单头)  
最高压力: 615Bar

**主要应用:**

石化、化工、电力、油气田、市政水处理等

**FEATURES & BENEFITS:**

- Absolutely no leakage
- Hydraulically actuated diaphragm features extremely long diaphragm life
- Internal pressure relief valve automatically protects hydraulic system from over pressure
- Advanced mechanically actuated refill system(MARS)ensure metering accuracy
- Simplex head standard, multiplex head available

**TECHNICAL SPECIFICATIONS:**

Capacity: Up to 15,885L/H (simplex)  
Max. Pressure: 615Bar

**APPLICATIONS:**

CPI, HPI, Oil & Gas, Power,  
Municipal water treatment, etc

## 马达驱动柱塞计量泵



### 产品特点:

- 结构简单、维护方便
- 可承受更高的进出口压力
- 吸上能力好
- 适用于高粘度、高温场合
- 可多台并联工作

### 主要参数:

最大流量: 14,300L/H (单头)  
 最高压力: 1,000Bar

### 主要应用:

石化、化工、油气田等

### FEATURES & BENEFITS:

- Simplified service, easy access to the main components
- High suction and discharge pressure capabilities
- Lowest NPSH requirements
- High temperature resistance, capable for liquids with high viscosity
- Simplex head standard, multiplex head available

### TECHNICAL SPECIFICATIONS:

Capacity: Up to 14,300L/H (simplex)  
 Max. Pressure: 1,000Bar

### APPLICATIONS:

CPI, HPI, Oil & Gas, etc

## 威廉姆斯WILLIAMS 气体驱动计量泵



### 产品特点:

- 压缩空气或天然气驱动, 无需电源, 本质防爆
- 柱塞式/双重密封
- 隔膜式/PTFE隔膜
- 密封材质适合大量不同的化工应用

### 主要参数:

最大流量: 336L/H  
 最高压力: 900BarG

### 主要应用:

海洋钻井平台、石油天然气、石化、化工等

### FEATURES & BENEFITS:

- Driven by compressed air or natural gas, inherent explosion-proof
- Dual Seal plunger
- Diaphragm type/PTFE
- Corrosion resistant materials for seal parts allow its' pump to be used in wide range of Chemical Process Industry

### TECHNICAL SPECIFICATIONS:

Capacity: Up to 336L/H  
 Max. Pressure: 900BarG

### APPLICATIONS:

Oil & Gas, ODP, CPI, HPI, etc

## 汉斯克HASKEL 气体增压泵



### 产品特点:

- 以普通压缩空气作为动力
- 无需任何润滑油, 不产生热量和火花
- 连续起停, 不受限制
- 适用于绝大多数介质
- 产品体积小, 产品范围广

### 主要参数:

气体增压泵, 最高压力: 2,690Bar  
 气动液体泵, 最高压力: 6,800Bar  
 Butech高压阀及管接件  
 最高压力: 10,000Bar

### 主要应用:

压力测试、气体传输、气体增压、螺栓紧固千斤顶、夹具、制动系统等

### FEATURES & BENEFITS:

- Air Driven, No Electrical Requirement
- Not Require Lubrication
- No Heat, Flame or Spark Risk
- No Limit to Continuous Start/Stop
- Suitable for Most Liquids & Gases
- Wide Range of Models

### TECHNICAL SPECIFICATIONS:

- Gas Booster: 2.690Bar
- Liquid Pump: 6,800Bar
- Butech Valves&Fitting: 10,000Bar

### APPLICATIONS:

Pressure testing, Gas transfer, Air pressure boosting, Jacking, Bolt tensioning, Clamping, Press overload, Braking, etc

## 水处理监控仪表



Water Treatment Controllers

### 主要参数:

- SCD游动电流检测仪  
输出信号: 4-20mA  
精度: 1%
- DP系列PH值控制器  
控制范围: 0-14PH单位  
精度: 0.01PH单位
- DR系列氧化还原值控制器  
控制范围: -2000~2000mV  
精度: 1mV
- DC、AC系列电导率值控制器  
控制范围: 0~500/1000/2500/5000 /  
10000/20000  $\mu$

### TECHNICAL SPECIFICATIONS:

- Streaming Current Detector (SCD)  
Output signal: 4-20mA  
Precision: 1%
- PH Controllers Range: 0-14PH  
Precision: 0.01PH
- ORP Controllers Range: -2000~2000mV  
Precision: 1 mV
- Conductivity Controllers Range:  
0~500/1000/2500/5000/10000/20000  $\mu$

### APPLICATIONS:

Municipal water treatment,  
Waster water treatment,  
Chemical process industry, etc

## HELISEM标准搅拌机



HELISEM Standard Mixers

### 主要参数:

- 高速和低速搅拌机
- 开式罐或密封罐, 容积可达400m<sup>3</sup>
- 压力达7Bar, 温度达150°C
- 材质: 碳钢、不锈钢、表面覆层处理

### 主要应用:

水处理、精细化工和终端产品溶液混合、  
固体悬浮、混凝等工艺

### TECHNICAL SPECIFICATIONS:

- High-speed and low-speed mixer
- Open or closed tank up to 400m<sup>3</sup>
- Max. pressure 7Bar, max. temperature 150°C
- Material: Carbon steel, Stainless steel or  
Halar coating

### APPLICATIONS:

Water treatment,  
Fine chemicals and final product,  
Homogenization,  
Holding in suspension, Flocculation, etc

## 罗宾ROBIN非标搅拌机



ROBIN Mixers

### 主要参数:

- 安装方式: 顶进/侧进/底进
- 槽罐容积: 0.01m<sup>3</sup> -100,000 m<sup>3</sup>
- 绝对压力: -1Bar-250Bar
- 电机功率: 1,000kW
- 叶轮直径: 12m
- 搅拌轴长: 35m

### 主要应用:

冶金、磷酸磷肥、油田、石化、化工、制药、  
电力、轻工、水处理等

### TECHNICAL SPECIFICATIONS:

- Top/side/bottom mounting
- Tank capacity from 0.01m<sup>3</sup> to 100,000m<sup>3</sup>
- Tank pressure from -1Bar to 250Bar
- Installed power up to 1,000kW
- Impeller diameter up to 12m
- Shaft length up to 35m

### APPLICATIONS:

Hydrometallurgy, Phosphoric acid  
and fertilizer, Petroleum, HPI, CPI,  
Pharmacies, Power, Light industries,  
Water treatment, etc

## 计量泵附件



### 主要产品:

- 脉冲阻尼器
- 安全阀、背压阀
- 箍断阀
- 流量校正柱

### 主要应用:

配套计量泵使用

### MAIN PRODUCTS:

- Pulsation Dampener
- Safety Valve, Back Pressure Valve
- Pinch Valve
- Calibration Column

### APPLICATIONS:

Use with Metering Pump

## 溶液制备及投加系统



### 主要产品:

- DP系列干投机
- POLYPACK AP连续式全自动溶液制备系统
- DOSAPACK一体式加药装置

### 主要应用:

各种水处理溶液制备和投加  
各种工业用添加剂制备和投加

### MAIN PRODUCTS:

- DP series Dry Feeder
- POLYPACK Automatic Polymer Preparation Units
- DOSAPACK Preparation and Dosing Units

### APPLICATIONS:

Kinds of solutions and additives used in water treatment or industry process

## YZ加臭系统



### 主要产品:

- NJEX加臭系统
- DTEX臭剂检测仪
- 附件

### 主要应用:

天然气、原油、易挥发液体取样  
城市天然气管道加注臭味剂

### MAIN PRODUCTS:

- NJEX Odorant Injection System
- DTEX Odorant Inspection Instrument
- Accessories

### APPLICATIONS:

Sampling for natural Gas, Crude oil, Refined products and special products industry  
Total system odorization for city natural gas pipeline